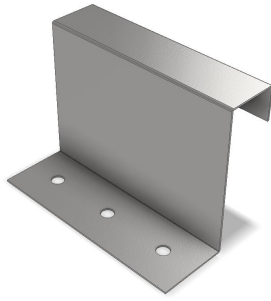




# 2 1/8" Fixed Engineered Panel Clip



## Application

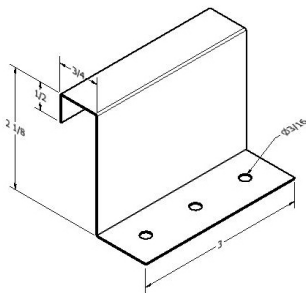
Standing seam panel clips used for attachment of mechanically seamed panel with movement of the roof panel

## Features and Benefits

- Manufactured from high quality, corrosion resistant steel
- Quality checked for a secure and functional fit
- Very limited amount of thermal travel. Always follow the standing seam panel manufacturer's details and instructions on proper use, location

## Product Selection

Material No.	Item	Description
FG-218-24	2 - 1/8" Fixed	24 ga. Galvanized / Galvalume / Prepainted



## Specifications

Height:	2 - 1/8"
Width:	3.00
Holes:	3-hole

## Installation and Application Considerations

Compatible with:

- Englert - C2400
- Englert - S2500 & S2400
- New Tech - SS210 & SS200
- Knudson - 2in. Mechanical Lock Ultra Loc
- Knudson - 2in. Mechanical Lock KR24
- Ultra Seam- US-200 & US-200C
- Zimmerman- SS2000 & SS2000A

- Always consult with panel manufacturer or design engineer to ensure proper clip recommendations