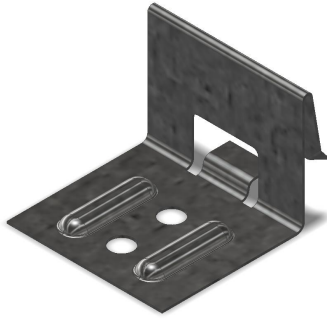




1-1/4" Snap Lock Engineered Panel Clip



Application

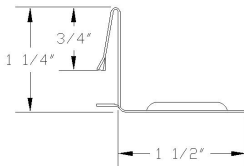
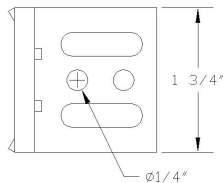
Standing seam panel clips used for attachment of mechanically seamed panel with movement of the roof panel

Features and Benefits

- Manufactured from high quality, corrosion resistant steel
- Quality checked for a secure and functional fit
- Very limited amount of thermal travel. Always follow the standing seam panel manufacturer's details and instructions on proper use, location

Product Selection

Material No.	Item	Description
SG-114-24	1 - 1/4" Snap Lock	24 ga. Galvanized / Galvalume / Prepainted



Specifications

Height: 1 - 1/4"
Width: 1 - 3/4"
Holes: 2-hole

Installation and Application Considerations

- Compatible with:
 - Englert - A1000
 - Knudson - 1" Snaplock
 - New Tech - SS450
- Always consult with panel manufacturer or design engineer to ensure proper clip recommendations