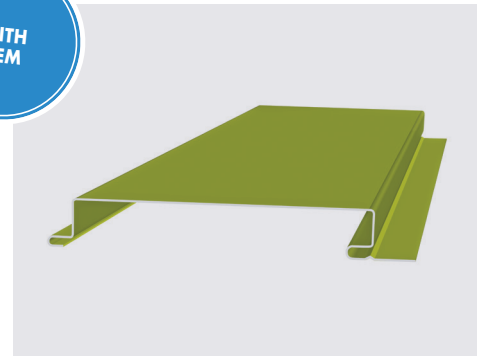
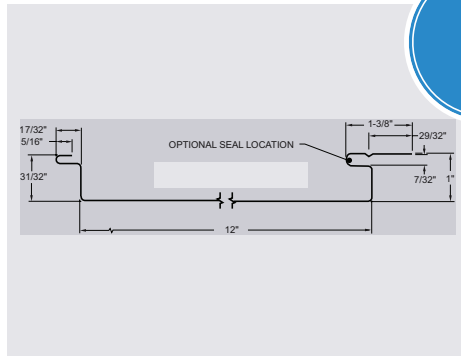
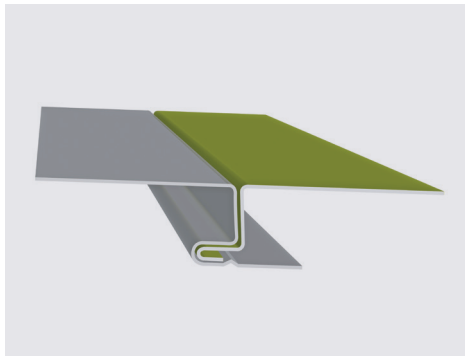


WITHOUT  
HEM



WITH  
HEM

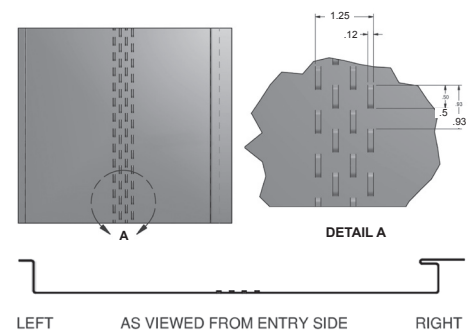
## PANEL INFORMATION

<b>Panel Type</b>	Wall / Soffit
<b>Panel Width</b>	12"
<b>Seam Height</b>	1.0"
<b>Panel Material</b>	22 ga—24 ga min.
<b>Panel Surface</b>	Smooth / Embossed Optional

## PANEL TESTING

<b>Uplift Resistance</b>	ASTM E 1592, UL 90
<b>Air Infiltration</b>	ASTM E 283
<b>Water Penetration</b>	ASTM E 331
<b>FBC Non-HVHZ Approval</b>	FL45939

## NET FREE AIR SPACE



## PANEL NOTES

This panel uses a 16" coil.

This panel uses 4" of material to form the panel.

If you take the square footage of the wall and multiply that by 1.25, the total will be the amount of coil needed to manufacture the panels.

Perforation opening size .50 [12.7] X .12 [3.0] = .06 Sq. In. [38.7 sq. mm.]

Openings per 12 inch length [304.8mm] = 51.25

Net Free Area / 12 inch = .06 Sq. In. X 51.25 = 3.08 Sq. In. [Net Free Area 1304.8mm = 38.7 sq. mm X 51.25 = 1983 sq. mm]