

YOUR ONE SOURCE FOR ARCHITECTURAL METAL

ACCESSORIES

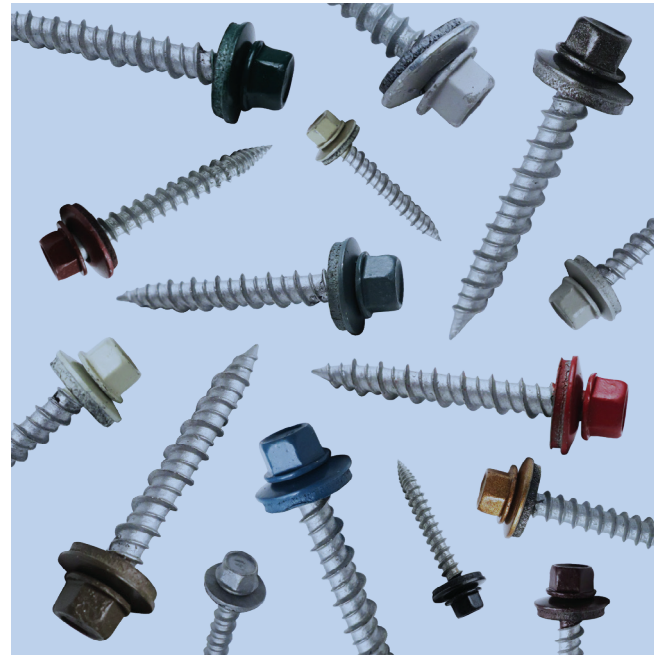
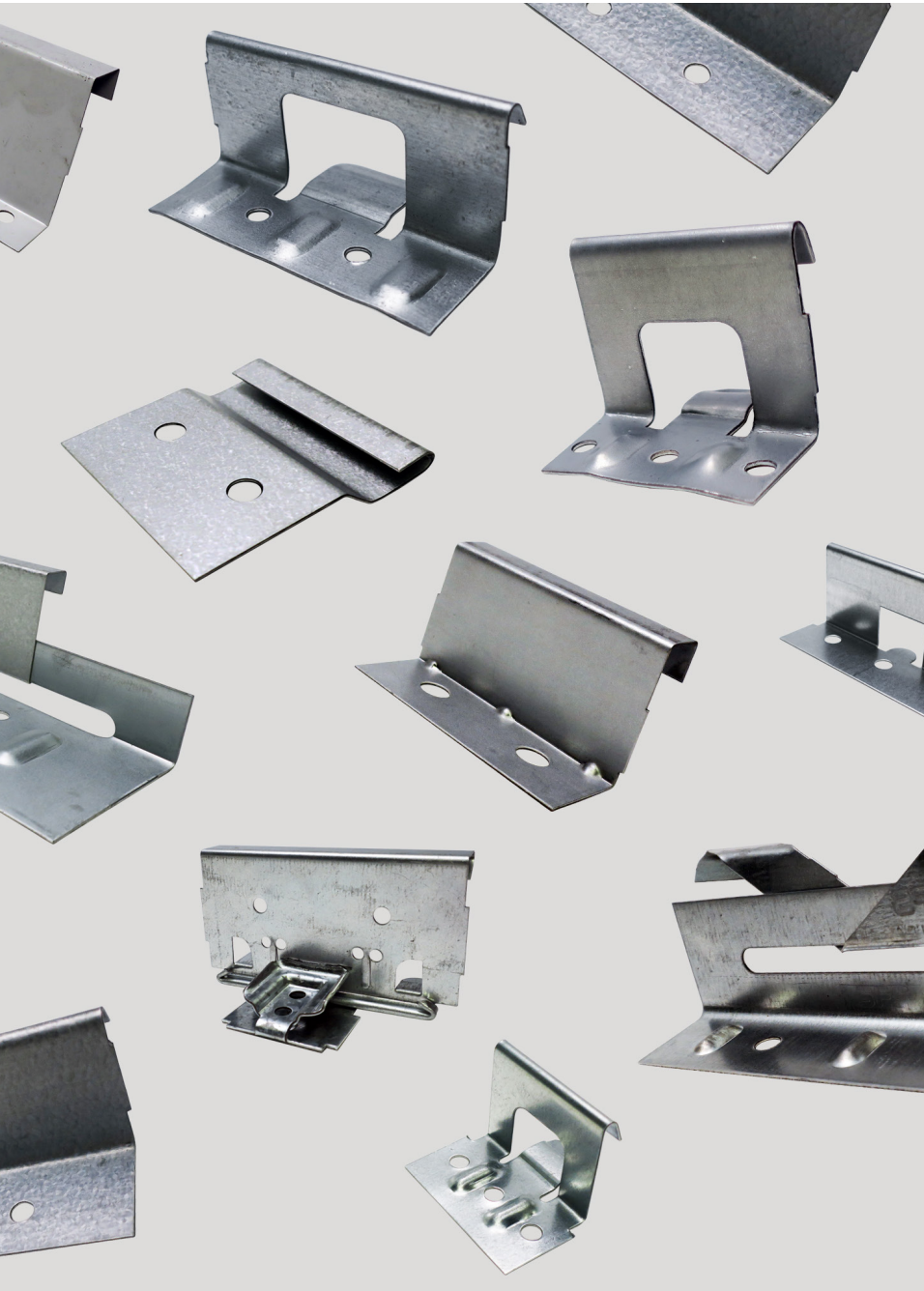
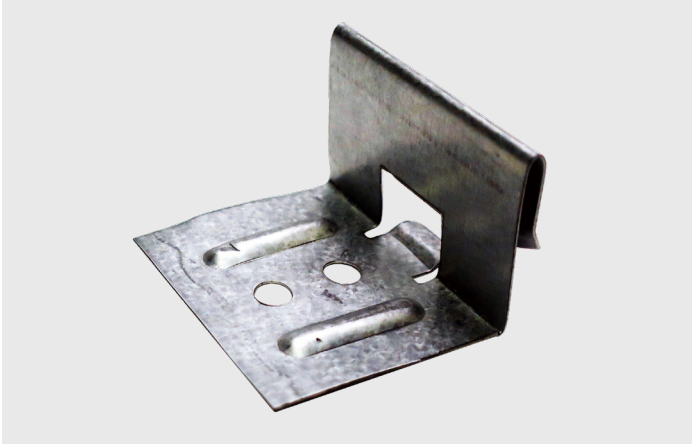


TABLE OF CONTENTS

SNAPLOCK CLIPS	1
MECHANICAL SEAM CLIPS	3
FIXED CLIPS	4
WAV PANEL CLIP	4
PANEL TITE SCREWS	5
CLIP SCREWS	6
POP RIVETS	7
BUTYL TAPE, SEALANTS, & PAINT	8
DEKTITE PIPE BOOTS	9
SHARKSKIN® ROOF UNDERLAYMENTS	10
S-5!® CLAMPS	11
S-5!® COLORGARD	12

SNAPLOCK CLIPS



1.5" 450 SL CLIP 24GA 2-HOLE

Panel Profile: SMI 1.5" 450 SL

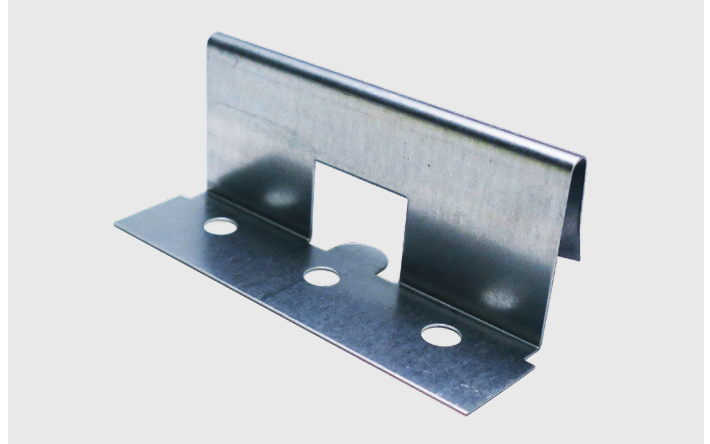
Box Quantity: 800

Steel Engineered: No

Aluminum Engineered: No

Part Number: XCSL15024CNUSM-1

Stainless Steel Part Number: XCSL15024SNUBP



1.5" 450 SL CLIP 24GA 3-HOLE

Panel Profile: SMI 1.5" 450 SL

Box Quantity: 600

Steel Engineered: No

Aluminum Engineered: No

Part Number: XCSL15024CNUSM

Stainless Steel Part Number: XCSL15024SNUSM-1



1.5" 550 SL CLIP 20GA

Panel Profile: SMI 1.5" 550 SL

Box Quantity: 500

Steel Engineered: Yes

Aluminum Engineered: No

Part Number: XCSL15020CSESF



1.5" 550 SL CLIP 24GA

Panel Profile: SMI 1.5" 550 SL

Box Quantity: 500

Steel Engineered: No

Aluminum Engineered: No

Part Number: XCSL15024CNUSM-2

Stainless Steel Part Number: XCSL15024SNUSM-2

SNAPLOCK CLIPS (CONT.)



1.5" 550 HD SL 20GA

Panel Profile: SMI 1.5" 550 SL

Box Quantity: 300

Steel Engineered: No

Aluminum Engineered: Yes

Part Number: XCSL15020CAESM

Stainless Steel Part Number: XCSL15020SAESM



1.75" SL UL CLIP 18GA

Panel Profile: SMI 1.75" SL

Box Quantity: 250

Steel Engineered: Yes

Aluminum Engineered: Yes

Part Number: XCSL17518CSESF

Stainless Steel Part Number: XCSL17518SSESF



1.75" SL CLIP 18GA

Panel Profile: SMI 1.75" SL

Box Quantity: 400

Steel Engineered: No

Aluminum Engineered: No

Part Number: XCSL17518CNUSM

Stainless Steel Part Number: XCSL15024SNUSM



1.75" ULTRA LENGTH SL 18GA

Panel Profile: SMI 1.75" SL

Box Quantity: 250

Steel Engineered: No

Aluminum Engineered: Yes

Part Number: XCSL17518SNUSM-1

Stainless Steel Part Number: XCSL17518CAESM

MECHANICAL SEAM CLIPS



1.5" MECHANICAL SEAM BUTTERFLY BASE (22GA) + TAB (24GA)

Panel Profile: SMI 1.5" Mechanical Seam

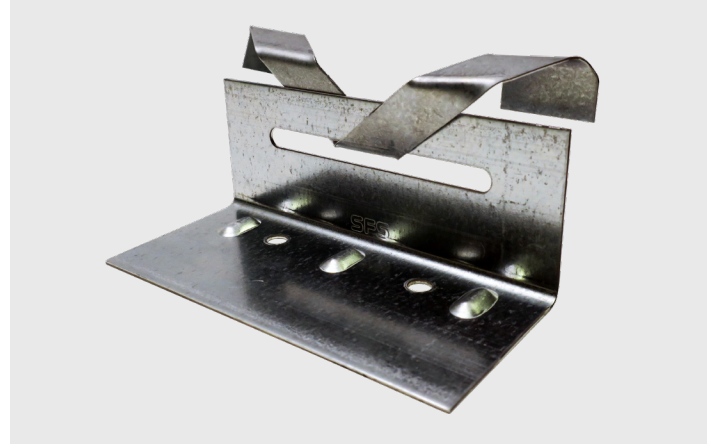
Box Quantity: 200

Steel Engineered: Yes

Aluminum Engineered: No

Part Number: XCMS15B22CSESF (Base), XCMS15T24CSESF (Tab)

Stainless Steel: XCMS15B22SSESF (Base), XCMS15T24SSESF (Tab)



2" MECHANICAL SEAM BUTTERFLY BASE (18GA) + TAB (22GA)

Panel Profile: SMI 2.0" Mechanical Seam

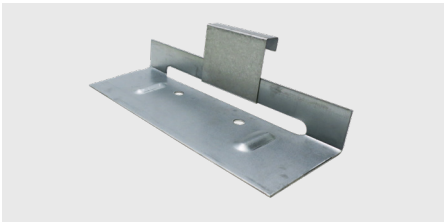
Box Quantity: 150

Steel Engineered: Yes

Aluminum Engineered: No

Part Number: XCMS20B18CESF (Base), XCMS20T22CSESF (Tab)

Stainless Steel: XCMS20B18SSESF (Base), XCMS20T22SSESF (Tab)



1.5" EXPANSION CLIP ASSEMBLED — 24GA TAB, 18GA BASE

Panel Profile: SMI 1.5" Mechanical Seam

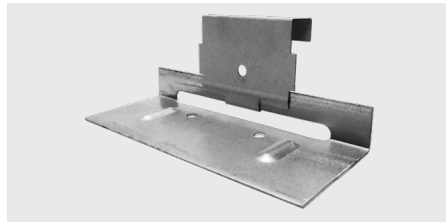
Box Quantity: 250

Steel Engineered: No

Aluminum Engineered: Yes

Part Number: XCMS15024CAESM

Stainless Steel: XCMS15024SAESM



2" EXPANSION CLIP ASSEMBLED — 22GA TAB, 18GA BASE

Panel Profile: SMI 2.0" Mechanical Seam

Box Quantity: 200

Steel Engineered: No

Aluminum Engineered: Yes

Part Number: XCMS20022CAESM

Stainless Steel: XCMS20022SAESM



2" MECHANICAL OPEN FRAMING FLOAT CLIP

Panel Profile: SMI 2.0" Mechanical Seam

Box Quantity: 100

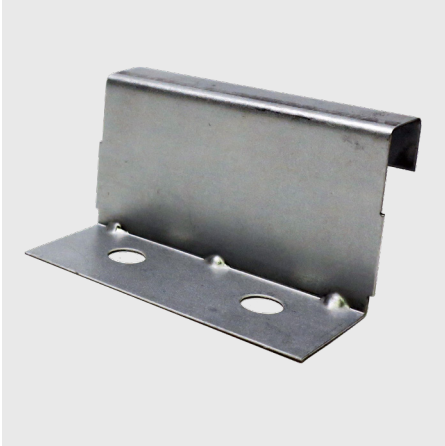
Steel Engineered: Yes

Aluminum Engineered: No

Part Number: XCMS20022CSESF

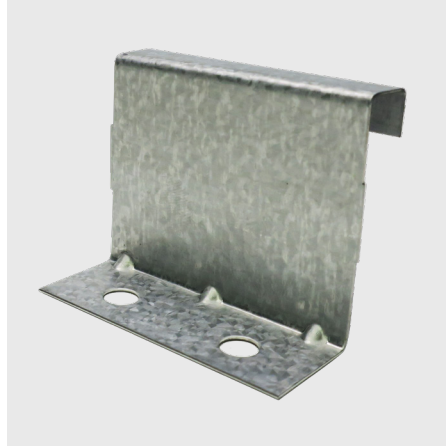
Stainless Steel: XCMS20022SSESF

FIXED CLIPS



1" FIXED CLIP 24GA & 26GA

Panel Profile: SMI 1.0" Mechanical Lock
Box Quantity: 1000
Steel Engineered: No
Aluminum Engineered: No
Part Number: XCMF10024CNUSM
Stainless Steel: XCMF10024SNUSM



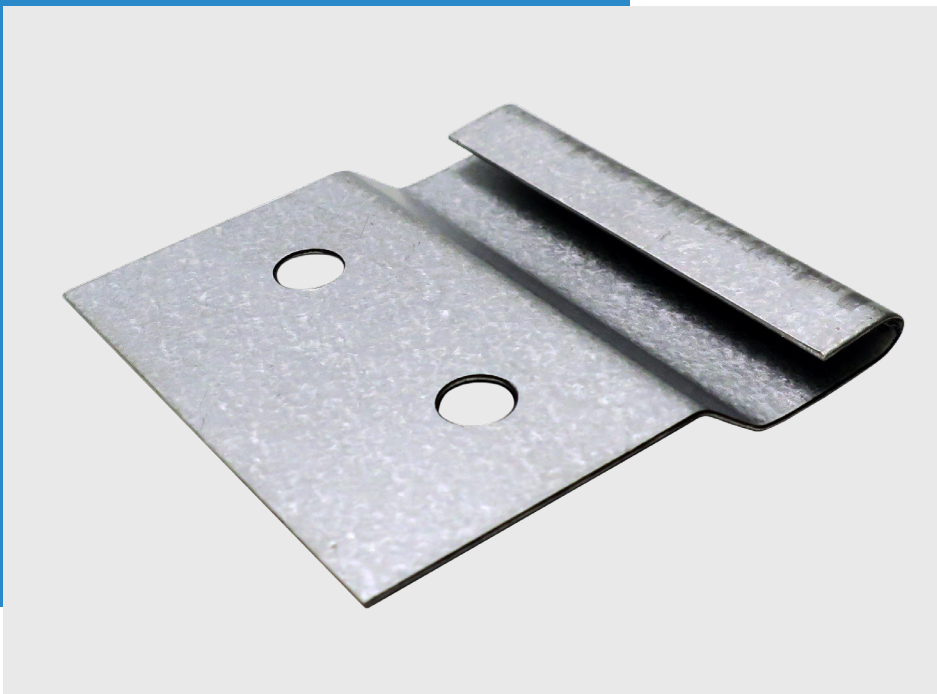
1.5" FIXED CLIP 24GA & 26GA

Panel Profile: SMI 1.5" Mechanical Lock
Box Quantity: 1000
Steel Engineered: No
Aluminum Engineered: No
Part Number: XCMF15024CNUSM
Stainless Steel: XCMF15024SNUSM



2" FIXED CLIP 24GA

Panel Profile: SMI 2.0" Mechanical Lock
Box Quantity: 300
Steel Engineered: No
Aluminum Engineered: No
Part Number: XCMF20024CNUSM
Stainless Steel: XCMF20024SNUSM



SMI WAV PANEL CLIP

Panel Profile: NTM WAV Panel
Box Quantity: 1500
Steel Engineered: Yes
Aluminum Engineered: No
Part Number: XCNTWAVCLIPSM

BURR-BUSTER PANEL TITE® SCREWS



Bag Quantity: 250

Available Sizes: 3/4", 1", 1-1/2", 2", 2-1/2", 3"

Designed for Wood: Burr-Buster #10-12 x 1.5" Panel Tite

Designed for Metal: #12-14 x 1.5" Blazer DP3

Substrate: Steel & stainless

Part Number: XF10HW150WSC(COLOR)TF

Painted to match

COLORS IN STOCK ▼

Custom colors available upon request.



CLIP SCREWS



#10-13 x 1" PANCAKE HEAD SCREW

Bag Quantity: 250

Available Sizes: 1", 1-1/2", 2"

Substrate: Carbon steel with a tri-seal coating

Part Number: XF10PC100WSCMLTF

Designed For: Wood

Used in engineered systems over wood



#10-9 x 1-1/8" ULTRA LOW PROFILE PANCAKE HEAD SCREW

Bag Quantity: 250

Available Sizes: 1-1/8", 1-5/8", 2-1/8"

Substrate: Carbon steel with a tri-seal coating (Stainless steel in 1-1/8" only)

Part Number: XF10U112WSCMLTF

Designed For: Wood



1/4-14 x 1" PANCAKE HEAD DP3

Bag Quantity: 250

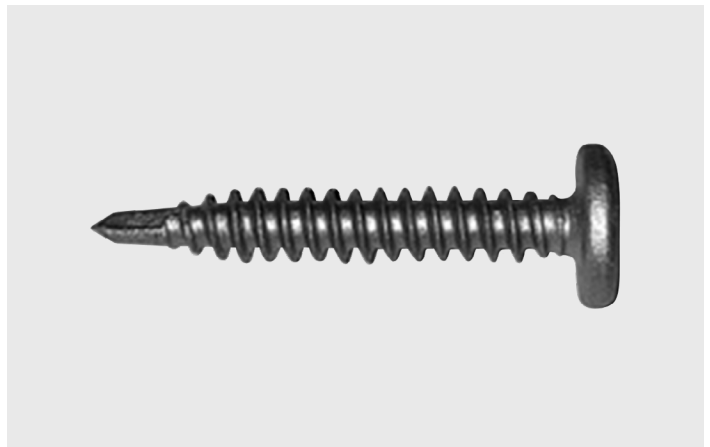
Available Sizes: 1"-8"

Substrate: Carbon steel with a tri-seal coating

Part Number: XF14PC100D3MLTF

Designed For: Metal up to 1/4" thick

Used in engineered systems over metal



#14-13 x 1.5" PANCAKE HEAD DP1

Bag Quantity: 250

Available Sizes: 1-1/5"-9"

Substrate: Carbon steel with a tri-seal coating

Part Number: XF14PC150D1CMLTF

Designed For: Light gauge metal or wood

POP RIVETS



Bag Quantity: 250
Available Sizes: #43 (other sizes available upon request)
Substrate: Stainless steel
Part Numbers: XPR43(COLOR)
Painted to match

COLORS IN STOCK ▼

Custom colors available upon request.



BUTYL TAPE, SEALANTS, & PAINT



SINGLE BEAD 1/8 x 1 50-FOOT BUTYL CAULK TAPE

Sold Per Each

Part Number: X1080BUT



DOUBLE BEAD 3/16 x 7/8 40-FOOT BUTYL CAULK TAPE

Sold Per Each

Part Number: X7840BUT

Used in engineered systems



NOVAFLEX SEALANT

Sold Per Each

Part Number: XSNF(COLOR)

Available in all Sheffield Metals colors



AIR DRY KYNAR PAINT PENS

Sold Per Each

Part Number: XPP(COLOR)

Applications: Touch up for cut edges and minor surface scratches

Available in all Sheffield Metals colors (Custom colors available upon request)



TOUCH UP SPRAY PAINT CAN

Sold Per Each

Part Number: XSP(COLOR)

Applications: Touch up for minor surfaces and scratches

Available in all Sheffield Metals colors (Custom colors available upon request)

DEKTITE #1-9 PIPE BOOTS



Size	Flash #	Part #
1/4" – 2"	#1	XBP1
1-3/4" – 3-1/4"	#2	XBP2
1/4" – 4"	#3	XBP3
3" – 6"	#4	XBP4
4" – 7"	#5	XBP5
5" – 9"	#6	XBP6
6" – 11"	#7	XBP7
8" – 13"	#8	XBP8
10" – 18"	#9	XBP9

Available Colors (3-5 Day Lead Time)

Brown, Black, Dark Gray, Light Gray, White, Dark Green, Light Green, Dark Blue, Light Blue, Bright Red, Terra Cotta

Sold Per Each



RETROFIT DEKTITE

Size	Part Number	Sold Per
3/4" – 2-3/4"	XPBR1	Each
2" – 7-1/4"	XPBR2	Each
3-1/4" – 10"	XPBR2	Each



HIGH TEMP SILICONE DEKTITE

Size	Part Number	Sold Per
#3	XPBHT3	Each
#5	XPBHT5	Each
#8	XPBHT8	Each

SHARKSKIN® ROOF UNDERLAYMENTS



SHARKSKIN COMP UNDERLAYMENT 48" X 250'

Roll Size: 10 squares
Sold Per Each
Part Number: XULSSCOMP004825



SHARKSKIN ULTRA SA UNDERLAYMENT 48" X 125'

Roll Size: 5 squares
Sold Per Each
Part Number: XULSSULRSA48125



SHARKSKIN ULTRA SA UNDERLAYMENT 8" X 125' MINI ROLL

Roll Size: .833 square
Sold Per Each
Part Number: XULSSULMINI08125



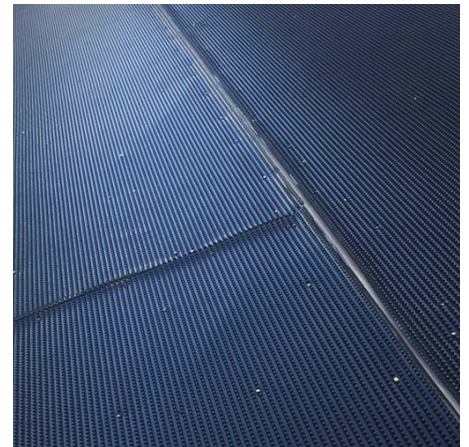
SHARKSKIN ULTRA UNDERLAYMENT 48" X 250'

Roll Size: 10 squares
Sold Per Each
Part Number: XULSSULTRA048250



SHARKSKIN ULTRA RADIANT UNDERLAYMENT 48" X 250'

Roll Size: 10 squares
Sold Per Each
Part Number: XULSSULTRAD048250



SHARKSKIN VENTILATED MAT 48" X 50'

Roll Size: 2 squares
Sold Per Each
Part Number: XULSSVENMAT48050

S-5!® CLAMPS



S-5-E CLAMP

Description: (2) 3/8" x .5" setscrews, (1) M8 x 16mm bolt

Minor Box Quantity: 60

Master Box Quantity: 300

Designed For: Traditional double-folded standing seam roofs

Compatible With: All metals except copper



S-5-N CLAMP (NEW)

Description: (2) 3/8" x .8" setscrews, (1) M8 x 16mm bolt, (1) N insert

Minor Box Quantity: 30

Master Box Quantity: 150

Designed For: Nail-flange SSR profiles (<1" in height)



S-5-NH 1.5 (NEW)

Minor Box Quantity: 24

Master Box Quantity: 96

Designed For: 1-1/2" nail strip profiles with a wider horizontal dimension (> 0.475" and ≤ 0.800"), the S-5-NH 1.5



S-5-S CLAMP

Description: (2) 3/8" x .8" setscrews, (1) M8 x 16mm bolt

Minor Box Quantity: 30

Master Box Quantity: 150

Designed For: Snap-together profiles



S-5-U CLAMP

Description: (2) 3/8" x .8" setscrews, (1) M8 x 16mm bolt

Minor Box Quantity: 30

Master Box Quantity: 150

Designed For: Vertically-oriented seams
Fits 85% of standing seam profiles manufactured in North America



S-5-V CLAMP

Description: (2) 3/8" x .8" setscrews, (1) M8 x 16mm bolt

Minor Box Quantity: 30

Master Box Quantity: 150

Designed For: Vertical machine-folded seams

Fits all the same vertically oriented seams as the S-5-U

S-5!® COLORGARD



COLORGARD UNPUNCHED

ColorGard is manufactured from mill-finished, aircraft quality aluminum. It comes in 8-foot long sections. Splices are included with ColorGard for adjacent sections. For use with S-5!® heavy duty clamps.

Box Quantity: (12) 8' rails



VERSACLIP

VersaClip makes installation easy, as it simply slides on the ColorGard crossmember. It can be used with all S-5! clamps.

Minor Box Quantity: 100

Master Box Quantity: 500



SNOCLIP II

SnoClip™ is added to retard the migration of snow and ice beneath the crossmembers.

Minor Box Quantity: 55

Master Box Quantity: 220



SNOCLIP III

SnoClip™ is added to retard the migration of snow and ice beneath the crossmembers.

Minor Box Quantity: 35

Master Box Quantity: 140

Note: A full line of S-5! products is available.

SHEFFIELD VILLAGE, OH

800.283.5262

ACWORTH, GA

800.929.9359

DENVER, CO

877.375.1477

ARLINGTON, TX

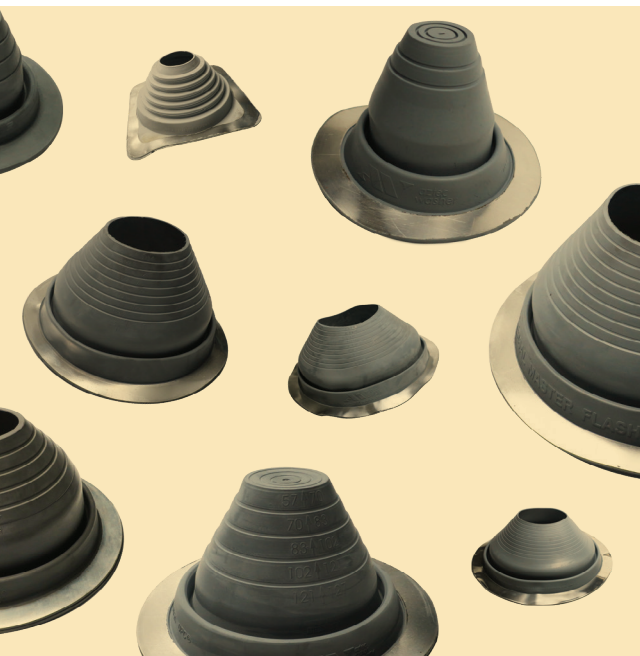
877.853.4904

LA MIRADA, CA

562.383.9800

PLANT CITY, FL

813.337.0310



sheffieldmetals.com



Copyright 2020. Sheffield Metals International. V4 - 0823