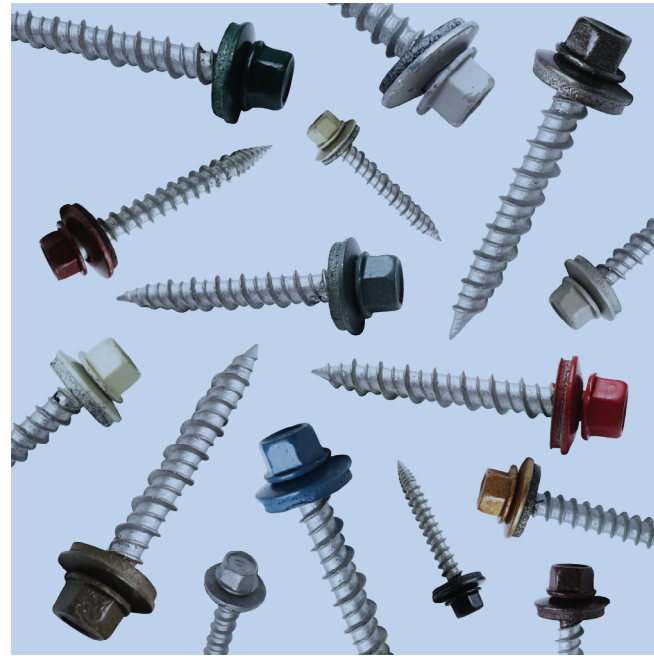
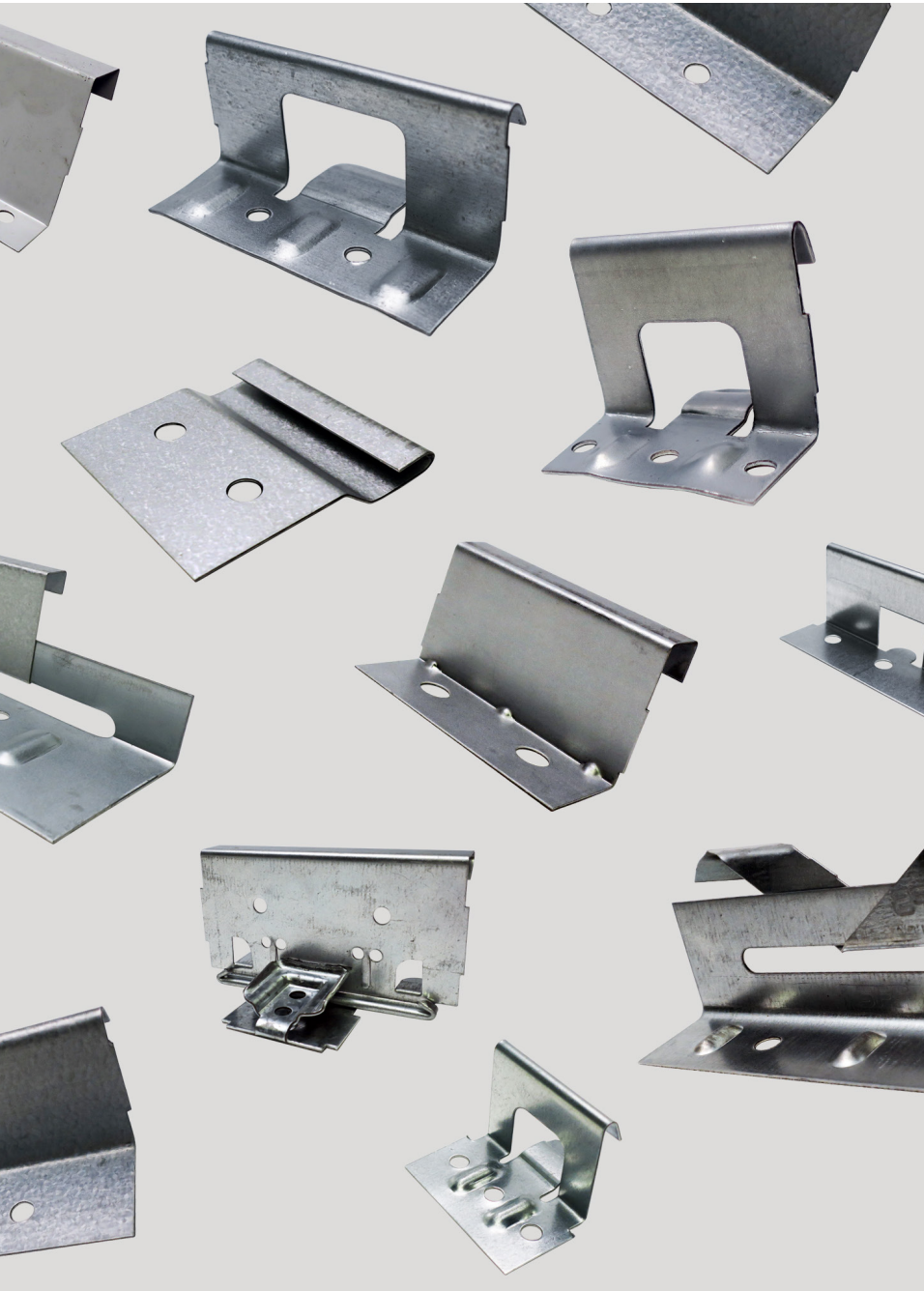


YOUR ONE SOURCE FOR ARCHITECTURAL METAL

# ACCESSORIES



# TABLE OF CONTENTS

<b>SNAPLOCK CLIPS</b>	<b>1</b>
<b>MECHANICAL SEAM CLIPS</b>	<b>3</b>
<b>FIXED CLIPS</b>	<b>4</b>
<b>WAV PANEL CLIP</b>	<b>4</b>
<b>PANEL TITE SCREWS</b>	<b>5</b>
<b>CLIP SCREWS</b>	<b>6</b>
<b>POP RIVETS</b>	<b>7</b>
<b>BUTYL TAPE, SEALANTS, &amp; PAINT</b>	<b>8</b>
<b>DEKTITE PIPE BOOTS</b>	<b>9</b>
<b>SHARKSKIN® ROOF UNDERLAYMENTS</b>	<b>10</b>
<b>S-5!® CLAMPS</b>	<b>11</b>
<b>S-5!® COLORGARD</b>	<b>12</b>

# SNAPLOCK CLIPS



## 1.5" 450 SL CLIP 24GA 2-HOLE

**Panel Profile:** SMI 1.5" 450 SL

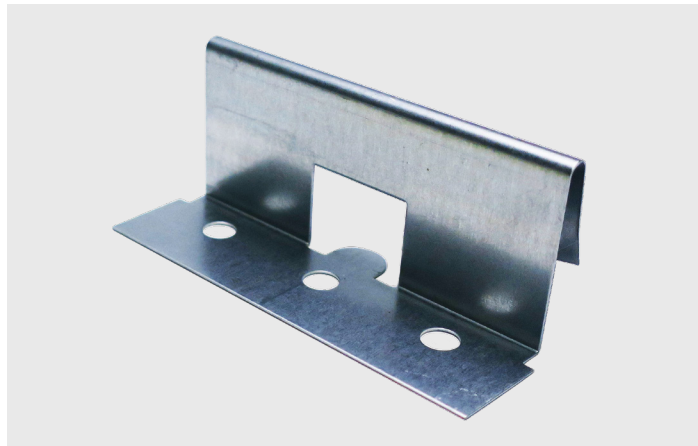
**Box Quantity:** 800

**Steel Engineered:** No

**Aluminum Engineered:** No

**Part Number:** XCSL15024CNUSM-1

**Stainless Steel Part Number:** XCSL15024SNUBP



## 1.5" 450 SL CLIP 24GA 3-HOLE

**Panel Profile:** SMI 1.5" 450 SL

**Box Quantity:** 600

**Steel Engineered:** No

**Aluminum Engineered:** No

**Part Number:** XCSL15024CNUSM

**Stainless Steel Part Number:** XCSL15024SNUSM-1



## 1.5" 550 SL CLIP 20GA

**Panel Profile:** SMI 1.5" 550 SL

**Box Quantity:** 500

**Steel Engineered:** Yes

**Aluminum Engineered:** No

**Part Number:** XCSL15024CSESF

**Stainless Steel Part Number:** XCSL15024SSESF



## 1.5" 550 SL CLIP 24GA

**Panel Profile:** SMI 1.5" 550 SL

**Box Quantity:** 500

**Steel Engineered:** No

**Aluminum Engineered:** No

**Part Number:** XCSL15024CNUSM-2

**Stainless Steel Part Number:** XCSL15024SNUSM-2

# SNAPLOCK CLIPS (CONT.)



## 1.5" 550 HD SL 20GA

**Panel Profile:** SMI 1.5" 550 SL

**Box Quantity:** 300

**Steel Engineered:** No

**Aluminum Engineered:** Yes

**Part Number:** XCSL15020CAESM

**Stainless Steel Part Number:** XCSL15020SAESM



## 1.75" SL UL CLIP 18GA

**Panel Profile:** SMI 1.75" SL

**Box Quantity:** 250

**Steel Engineered:** Yes

**Aluminum Engineered:** Yes

**Part Number:** XCSL17518CSESF

**Stainless Steel Part Number:** XCSL17518SSESF



## 1.75" SL CLIP 18GA

**Panel Profile:** SMI 1.75" SL

**Box Quantity:** 400

**Steel Engineered:** No

**Aluminum Engineered:** No

**Part Number:** XCSL17518CNUSM

**Stainless Steel Part Number:** XCSL15024SNUSM



## 1.75" ULTRA LENGTH SL 18GA

**Panel Profile:** SMI 1.75" SL

**Box Quantity:** 250

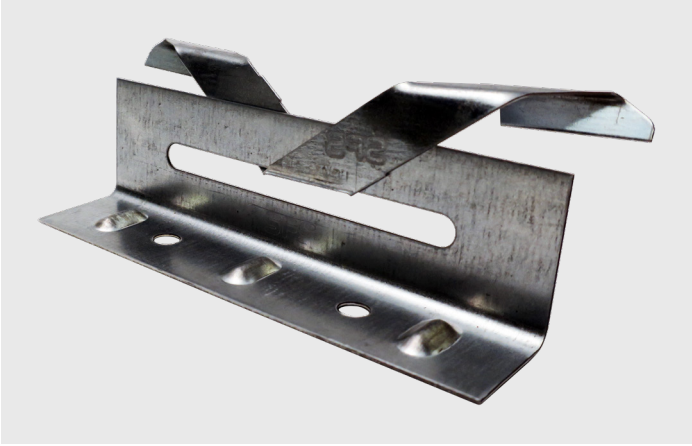
**Steel Engineered:** No

**Aluminum Engineered:** Yes

**Part Number:** XCSL17518SNUSM-1

**Stainless Steel Part Number:** XCSL17518CAESM

# MECHANICAL SEAM CLIPS



## 1.5" MECHANICAL SEAM BUTTERFLY BASE (22GA) + TAB (24GA)

**Panel Profile:** SMI 1.5" Mechanical Seam

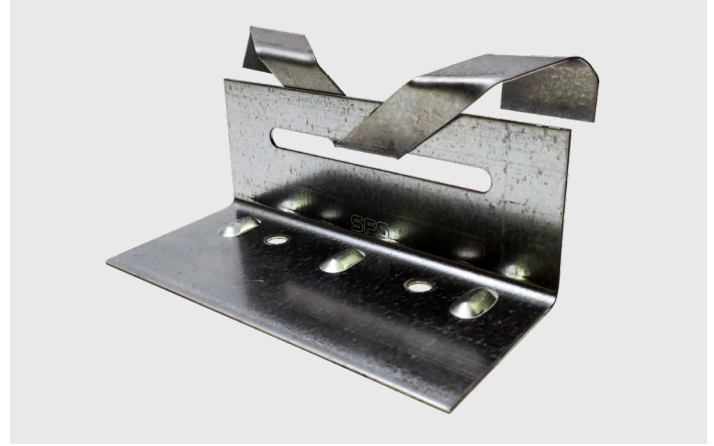
**Box Quantity:** 200

**Steel Engineered:** Yes

**Aluminum Engineered:** No

**Part Number:** XCMS15B22CSESF (Base), XCMS15T24CSESF (Tab)

**Stainless Steel:** XCMS15B22SSESF (Base), XCMS15T24SSESF (Tab)



## 2" MECHANICAL SEAM BUTTERFLY BASE (18GA) + TAB (22GA)

**Panel Profile:** SMI 2.0" Mechanical Seam

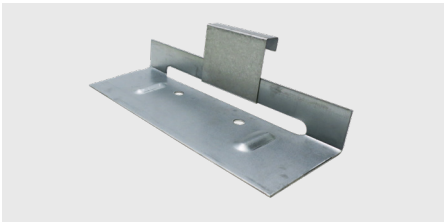
**Box Quantity:** 150

**Steel Engineered:** Yes

**Aluminum Engineered:** No

**Part Number:** XCMS20B18CESF (Base), XCMS20T22CSESF (Tab)

**Stainless Steel:** XCMS20B18SSESF (Base), XCMS20T22SSESF (Tab)



## 1.5" EXPANSION CLIP ASSEMBLED — 24GA TAB, 18GA BASE

**Panel Profile:** SMI 1.5" Mechanical Seam

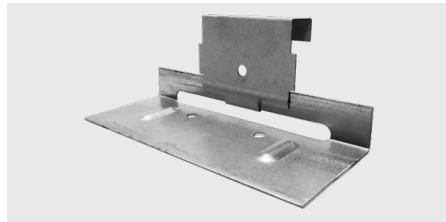
**Box Quantity:** 250

**Steel Engineered:** No

**Aluminum Engineered:** Yes

**Part Number:** XCMS15024CAESM

**Stainless Steel:** XCMS15024SAESM



## 2" EXPANSION CLIP ASSEMBLED — 22GA TAB, 18GA BASE

**Panel Profile:** SMI 2.0" Mechanical Seam

**Box Quantity:** 200

**Steel Engineered:** No

**Aluminum Engineered:** Yes

**Part Number:** XCMS20022CAESM

**Stainless Steel:** XCMS20022SAESM



## 2" MECHANICAL OPEN FRAMING FLOAT CLIP

**Panel Profile:** SMI 2.0" Mechanical Seam

**Box Quantity:** 100

**Steel Engineered:** Yes

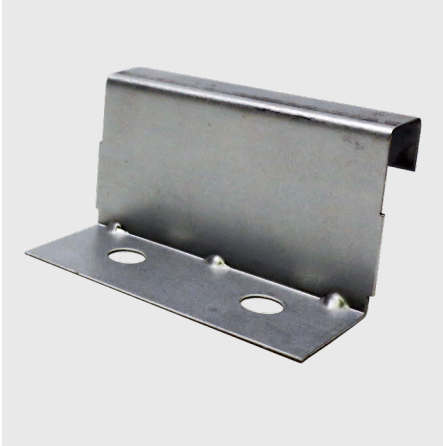
**Aluminum Engineered:** No

**Part Number:** XCMS20022CSESF

**Stainless Steel:** XCMS20022SSESF

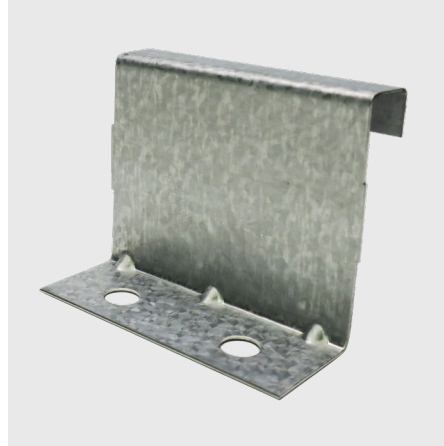


# FIXED CLIPS



## 1" FIXED CLIP 24GA & 26GA

**Panel Profile:** SMI 1.0" Mechanical Lock  
**Box Quantity:** 1000  
**Steel Engineered:** No  
**Aluminum Engineered:** No  
**Part Number:** XCMF10024CNUSM  
**Stainless Steel:** XCMF10024SNUSM



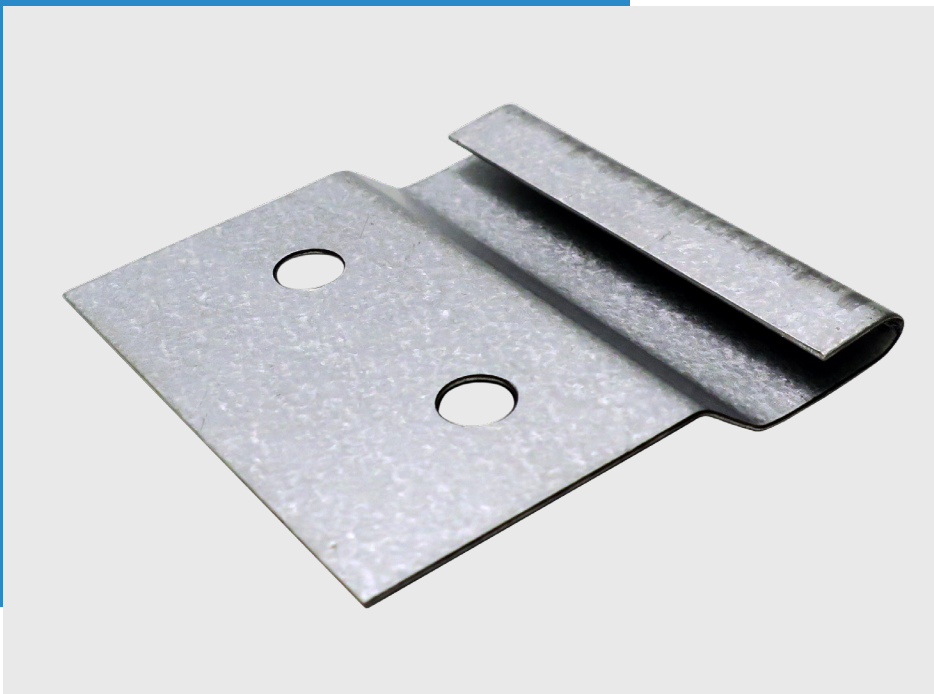
## 1.5" FIXED CLIP 24GA & 26GA

**Panel Profile:** SMI 1.5" Mechanical Lock  
**Box Quantity:** 1000  
**Steel Engineered:** No  
**Aluminum Engineered:** No  
**Part Number:** XCMF15024CNUSM  
**Stainless Steel:** XCMF15024SNUSM



## 2" FIXED CLIP 24GA

**Panel Profile:** SMI 2.0" Mechanical Lock  
**Box Quantity:** 300  
**Steel Engineered:** No  
**Aluminum Engineered:** No  
**Part Number:** XCMF20024CNUSM  
**Stainless Steel:** XCMF20024SNUSM



# SMI WAV PANEL CLIP

**Panel Profile:** NTM WAV Panel  
**Box Quantity:** 1500  
**Steel Engineered:** Yes  
**Aluminum Engineered:** No  
**Part Number:** XCNTWAVCLIPSM

# BURR-BUSTER PANEL TITE® SCREWS



**Bag Quantity:** 250

**Available Sizes:** 3/4", 1", 1-1/2", 2", 2-1/2", 3"

**Designed for Wood:** Burr-Buster #10-12 x 1.5" Panel Tite

**Designed for Metal:** #12-14 x 1.5" Blazer DP3

**Substrate:** Steel & stainless

**Part Number:** XF10HW150WSC(COLOR)TF

**Painted to match**

**COLORS IN STOCK ▼**

*Custom colors available upon request.*



# CLIP SCREWS



## #10-13 x 1" PANCAKE HEAD SCREW

**Bag Quantity:** 250

**Available Sizes:** 1", 1-1/2", 2"

**Substrate:** Carbon steel with a tri-seal coating

**Part Number:** XF10PC100WSCMLTF

**Designed For:** Wood

**Used in engineered systems over wood**



## #10-9 x 1-1/8" ULTRA LOW PROFILE PANCAKE HEAD SCREW

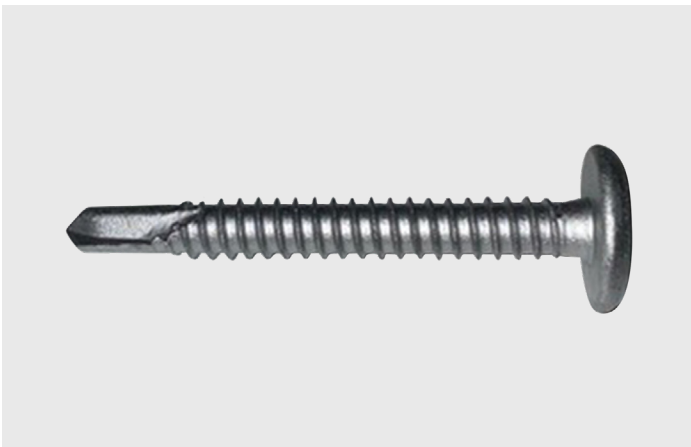
**Bag Quantity:** 250

**Available Sizes:** 1-1/8", 1-5/8", 2-1/8"

**Substrate:** Carbon steel with a tri-seal coating (Stainless steel in 1-1/8" only)

**Part Number:** XF10U112WSCMLTF

**Designed For:** Wood



## 1/4-14 x 1" PANCAKE HEAD DP3

**Bag Quantity:** 250

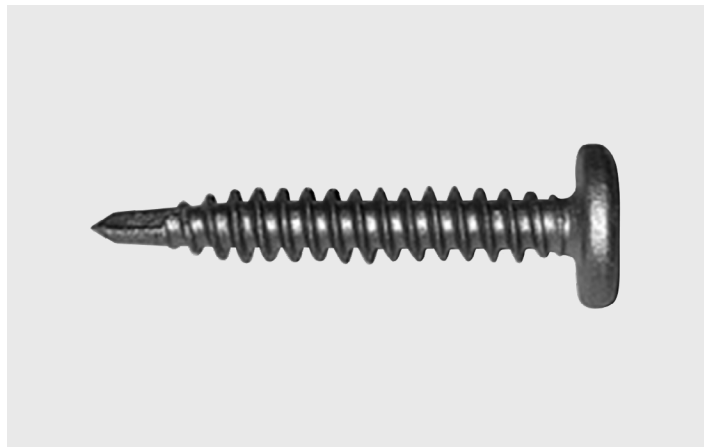
**Available Sizes:** 1"-8"

**Substrate:** Carbon steel with a tri-seal coating

**Part Number:** XF14PC100D3MLTF

**Designed For:** Metal up to 1/4" thick

**Used in engineered systems over metal**



## #14-13 x 1.5" PANCAKE HEAD DP1

**Bag Quantity:** 250

**Available Sizes:** 1-1/5"-9"

**Substrate:** Carbon steel with a tri-seal coating

**Part Number:** XF14PC150D1CMLTF

**Designed For:** Light gauge metal or wood



# POP RIVETS



**Bag Quantity:** 250  
**Available Sizes:** #43 (other sizes available upon request)  
**Substrate:** Stainless steel  
**Part Numbers:** XPR43(COLOR)  
**Painted to match**

**COLORS IN STOCK ▼**

*Custom colors available upon request.*



# BUTYL TAPE, SEALANTS, & PAINT



## SINGLE BEAD 1/8 x 1 50-FOOT BUTYL CAULK TAPE

Sold Per Each

Part Number: X1080BUT



## DOUBLE BEAD 3/16 x 7/8 40-FOOT BUTYL CAULK TAPE

Sold Per Each

Part Number: X7840BUT

Used in engineered systems



## NOVAFLEX SEALANT

Sold Per Each

Part Number: XSNF(COLOR)

Available in all Sheffield Metals colors



## AIR DRY KYNAR PAINT PENS

Sold Per Each

Part Number: XPP(COLOR)

Applications: Touch up for cut edges and minor surface scratches

Available in all Sheffield Metals colors (Custom colors available upon request)



## TOUCH UP SPRAY PAINT CAN

Sold Per Each

Part Number: XSP(COLOR)

Applications: Touch up for minor surfaces and scratches

Available in all Sheffield Metals colors (Custom colors available upon request)

# DEKTITE #1-9 PIPE BOOTS



Size	Flash #	Part #
1/4" – 2"	#1	XBP1
1-3/4" – 3-1/4"	#2	XBP2
1/4" – 4"	#3	XBP3
3" – 6"	#4	XBP4
4" – 7"	#5	XBP5
5" – 9"	#6	XBP6
6" – 11"	#7	XBP7
8" – 13"	#8	XBP8
10" – 18"	#9	XBP9

## Available Colors (3-5 Day Lead Time)

Brown, Black, Dark Gray, Light Gray, White, Dark Green, Light Green, Dark Blue, Light Blue, Bright Red, Terra Cotta

**Sold Per Each**



## RETROFIT DEKTITE

Size	Part Number	Sold Per
3/4" – 2-3/4"	XPBR1	Each
2" – 7-1/4"	XPBR2	Each
3-1/4" – 10"	XPBR2	Each



## HIGH TEMP SILICONE DEKTITE

Size	Part Number	Sold Per
#3	XPBHT3	Each
#5	XPBHT5	Each
#8	XPBHT8	Each



# SHARKSKIN® ROOF UNDERLAYMENTS



## SHARKSKIN COMP UNDERLAYMENT 48" X 250'

**Roll Size:** 10 squares

**Sold Per Each**

**Part Number:** XULSSCOMP004825



## SHARKSKIN ULTRA SA UNDERLAYMENT 48" X 125'

**Roll Size:** 5 squares

**Sold Per Each**

**Part Number:** XULSSULRSA48125

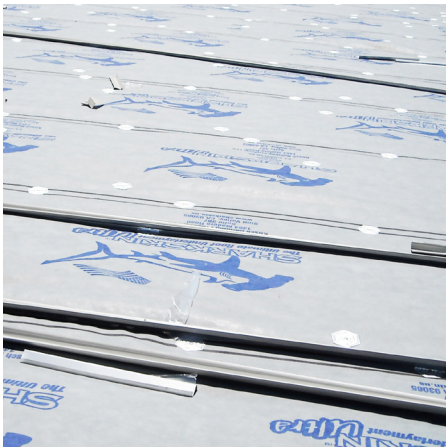


## SHARKSKIN ULTRA SA UNDERLAYMENT 8" X 125' MINI ROLL

**Roll Size:** .833 square

**Sold Per Each**

**Part Number:** XULSSULMINI08125



## SHARKSKIN ULTRA UNDERLAYMENT 48" X 250'

**Roll Size:** 10 squares

**Sold Per Each**

**Part Number:** XULSSULTRA048250

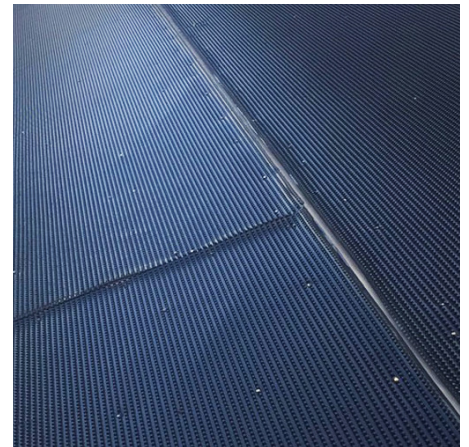


## SHARKSKIN ULTRA RADIANT UNDERLAYMENT 48" X 250'

**Roll Size:** 10 squares

**Sold Per Each**

**Part Number:** XULSSULTRAD048250



## SHARKSKIN VENTILATED MAT 48" X 50'

**Roll Size:** 2 squares

**Sold Per Each**

**Part Number:** XULSSVENMAT48050



# S-5!® CLAMPS



## S-5-E CLAMP

**Description:** (2) 3/8" x .5" setscrews, (1) M8 x 16mm bolt

**Minor Box Quantity:** 60

**Master Box Quantity:** 300

**Designed For:** Traditional double-folded standing seam roofs

**Compatible With:** All metals except copper



## S-5-N CLAMP (NEW)

**Description:** (2) 3/8" x .8" setscrews, (1) M8 x 16mm bolt, (1) N insert

**Minor Box Quantity:** 30

**Master Box Quantity:** 150

**Designed For:** Nail-flange SSR profiles (<1" in height)



## S-5-NH 1.5 (NEW)

**Minor Box Quantity:** 24

**Master Box Quantity:** 96

**Designed For:** 1-1/2" nail strip profiles with a wider horizontal dimension (> 0.475" and ≤ 0.800"), the S-5-NH 1.5



## S-5-S CLAMP

**Description:** (2) 3/8" x .8" setscrews, (1) M8 x 16mm bolt

**Minor Box Quantity:** 30

**Master Box Quantity:** 150

**Designed For:** Snap-together profiles



## S-5-U CLAMP

**Description:** (2) 3/8" x .8" setscrews, (1) M8 x 16mm bolt

**Minor Box Quantity:** 30

**Master Box Quantity:** 150

**Designed For:** Vertically-oriented seams  
**Fits 85% of standing seam profiles manufactured in North America**



## S-5-V CLAMP

**Description:** (2) 3/8" x .8" setscrews, (1) M8 x 16mm bolt

**Minor Box Quantity:** 30

**Master Box Quantity:** 150

**Designed For:** Vertical machine-folded seams

**Fits all the same vertically oriented seams as the S-5-U**

# S-5!® COLORGARD



## COLORGARD UNPUNCHED

ColorGard is manufactured from mill-finished, aircraft quality aluminum. It comes in 8-foot long sections. Splices are included with ColorGard for adjacent sections. For use with S-5!® heavy duty clamps.

**Box Quantity:** (12) 8' rails



## VERSACLIP

VersaClip makes installation easy, as it simply slides on the ColorGard crossmember. It can be used with all S-5! clamps.

**Minor Box Quantity:** 100

**Master Box Quantity:** 500



## SNOCLIP II

SnoClip™ is added to retard the migration of snow and ice beneath the crossmembers.

**Minor Box Quantity:** 55

**Master Box Quantity:** 220



## SNOCLIP III

SnoClip™ is added to retard the migration of snow and ice beneath the crossmembers.

**Minor Box Quantity:** 35

**Master Box Quantity:** 140

**Note:** A full line of S-5! products is available.

**SHEFFIELD VILLAGE, OH**

800.283.5262

**ACWORTH, GA**

800.929.9359

**DENVER, CO**

877.375.1477

**ARLINGTON, TX**

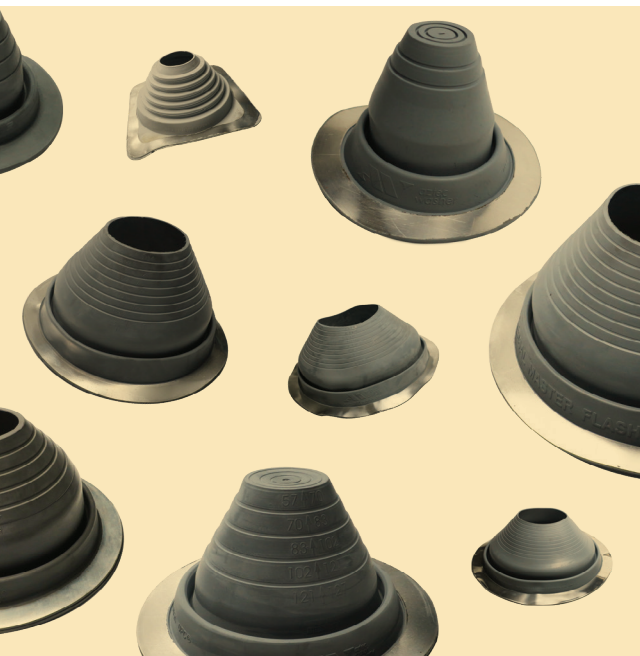
877.853.4904

**LA MIRADA, CA**

562.383.9800

**SAN JOSE, CA**

408.916.3262



[sheffieldmetals.com](http://sheffieldmetals.com)



Copyright 2020. Sheffield Metals International. V3 - 0621