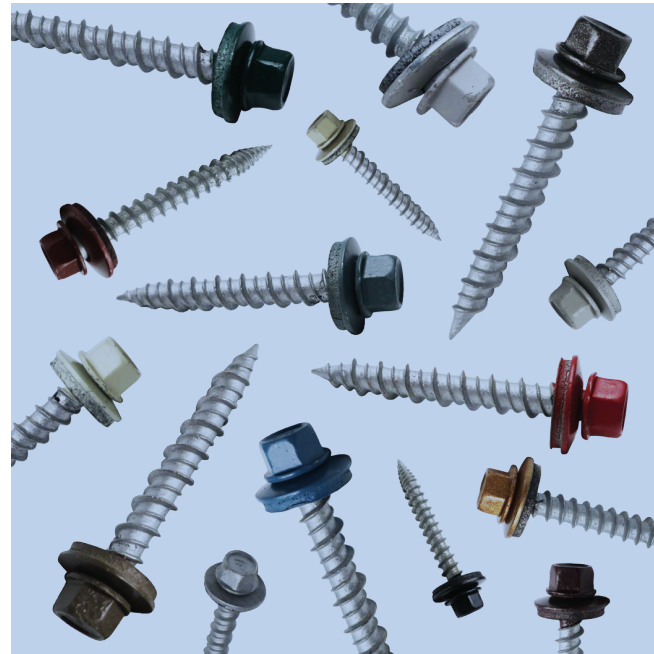
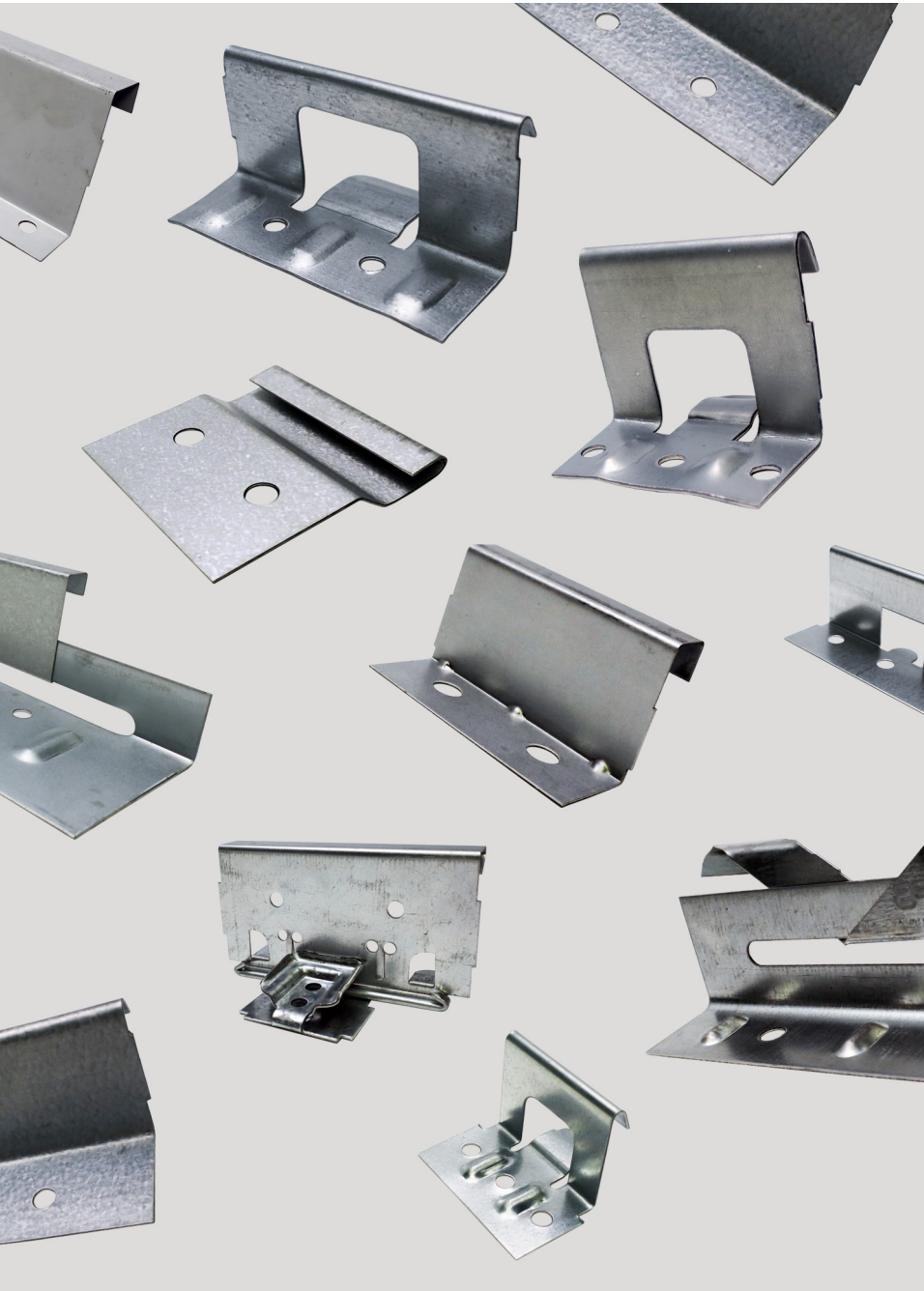


YOUR ONE SOURCE FOR ARCHITECTURAL METAL

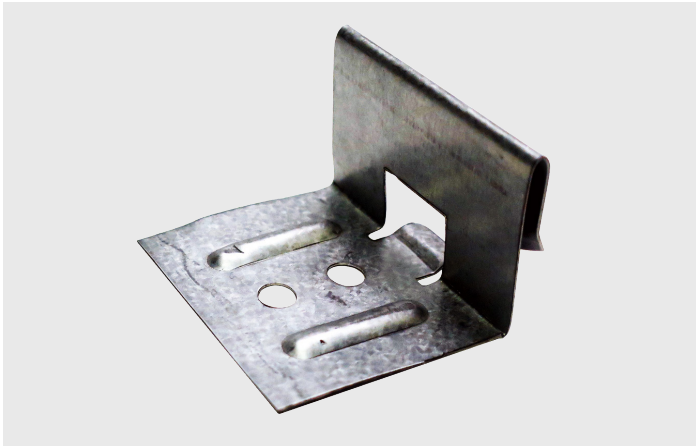
# ACCESSORIES



# TABLE OF CONTENTS

<b>SNAPLOCK CLIPS</b>	<b>1</b>
<b>MECHANICAL SEAM CLIPS</b>	<b>3</b>
<b>MECHANICAL LOCK FIXED CLIPS</b>	<b>4</b>
<b>WAV PANEL CLIP</b>	<b>4</b>
<b>PANEL TITE SCREWS</b>	<b>5</b>
<b>CLIP SCREWS</b>	<b>6</b>
<b>POP RIVETS</b>	<b>7</b>
<b>BUTYL TAPE, SEALANTS, &amp; PAINT</b>	<b>8</b>
<b>DEKTITE PIPE BOOTS</b>	<b>9</b>
<b>SHARKSKIN UNDERLAYMENT</b>	<b>10</b>
<b>S-5!® CLAMPS</b>	<b>11</b>
<b>S-5!® COLORGARD</b>	<b>12</b>

# SNAPLOCK CLIPS



## 1.5" 450 SL CLIP 24GA 2-HOLE

**Panel Profile:** SMI 1.5" 450 SL

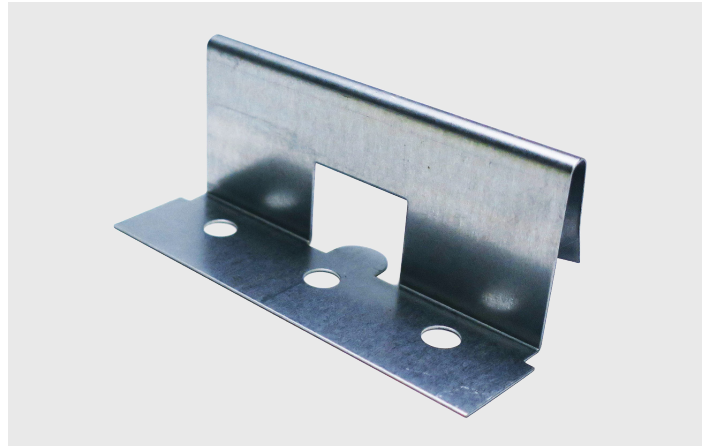
**Box Quantity:** 800

**Steel Engineered:** No

**Aluminum Engineered:** No

**Part Number:** XCSL15024CNUSM-1

**Stainless Steel Part Number:** XCSL15024SNUBP



## 1.5" 450 SL CLIP 24GA 3-HOLE

**Panel Profile:** SMI 1.5" 450 SL

**Box Quantity:** 600

**Steel Engineered:** No

**Aluminum Engineered:** No

**Part Number:** XCSL15024CNUSM

**Stainless Steel Part Number:** XCSL15024SNUSM-1



## 1.5" 550 SL CLIP 20GA

**Panel Profile:** SMI 1.5" 550 SL

**Box Quantity:** 500

**Steel Engineered:** Yes

**Aluminum Engineered:** No

**Part Number:** XCSL15024CSESF

**Stainless Steel Part Number:** XCSL15024SSESF



## 1.5" 550 SL CLIP 24GA

**Panel Profile:** SMI 1.5" 550 SL

**Box Quantity:** 500

**Steel Engineered:** No

**Aluminum Engineered:** No

**Part Number:** XCSL15024CNUSM-2

**Stainless Steel Part Number:** XCSL15024SNUSM-2

# SNAPLOCK CLIPS (CONT.)



## 1.5" 550 HD SL 20GA

**Panel Profile:** SMI 1.5" 550 SL

**Box Quantity:** 300

**Steel Engineered:** No

**Aluminum Engineered:** Yes

**Part Number:** XCSL15020CAESM

**Stainless Steel Part Number:** XCSL15020SAESM



## 1.75" SL UL CLIP 18GA

**Panel Profile:** SMI 1.75" SL

**Box Quantity:** 250

**Steel Engineered:** Yes

**Aluminum Engineered:** Yes

**Part Number:** XCSL17518CSESF

**Stainless Steel Part Number:** XCSL17518SSESF



## 1.75" SL CLIP 18GA

**Panel Profile:** SMI 1.75" SL

**Box Quantity:** 400

**Steel Engineered:** No

**Aluminum Engineered:** No

**Part Number:** XCSL17518CNUSM

**Stainless Steel Part Number:** XCSL15024SNUSM



## 1.75" ULTRA LENGTH SL 18GA

**Panel Profile:** SMI 1.75" SL

**Box Quantity:** 250

**Steel Engineered:** No

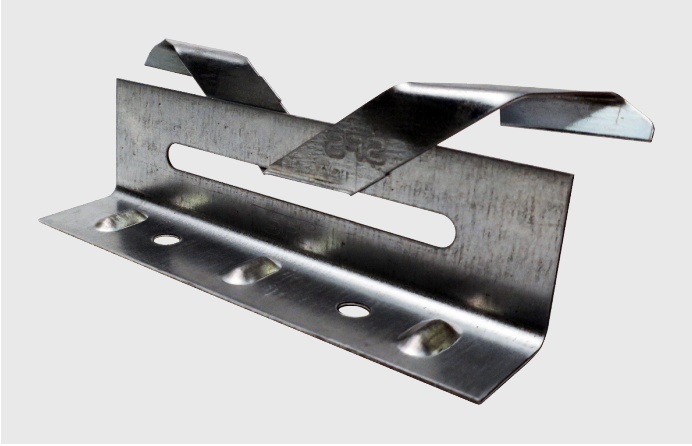
**Aluminum Engineered:** Yes

**Part Number:** XCSL17518SNUSM-1

**Stainless Steel Part Number:** XCSL17518CAESM



# MECHANICAL SEAM CLIPS



## 1.5" MECHANICAL SEAM BUTTERFLY BASE (22GA) + TAB (24GA)

**Panel Profile:** SMI 1.5" Mechanical Seam

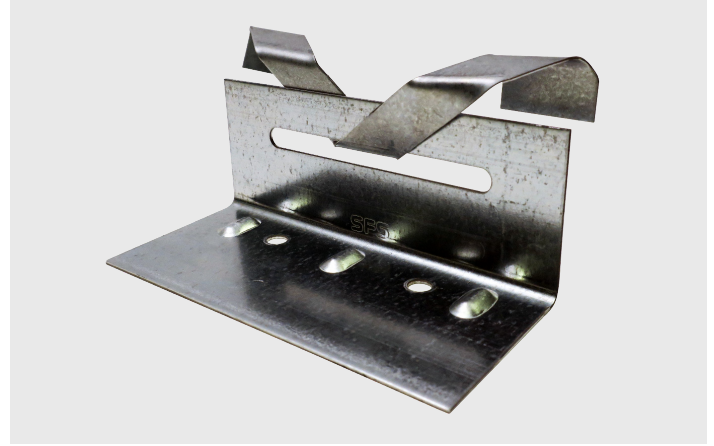
**Box Quantity:** 200

**Steel Engineered:** Yes

**Aluminum Engineered:** No

**Part Number:** XCMS15B22CSESF (Base), XCMS15T24CSESF (Tab)

**Stainless Steel:** XCMS15B22SSESF (Base), XCMS15T24SSESF (Tab)



## 2" MECHANICAL SEAM BUTTERFLY BASE (18GA) + TAB (22GA)

**Panel Profile:** SMI 2" Mechanical Seam

**Box Quantity:** 150

**Steel Engineered:** Yes

**Aluminum Engineered:** No

**Part Number:** XCMS20B18CESF (Base), XCMS20T22CSESF (Tab)

**Stainless Steel:** XCMS20B18SSESF (Base), XCMS20T22SSESF (Tab)



## 1.5" ML EXPANSION CLIP ASSEMBLED — 24GA TAB, 18GA BASE

**Panel Profile:** SMI 1.5" Mechanical Seam

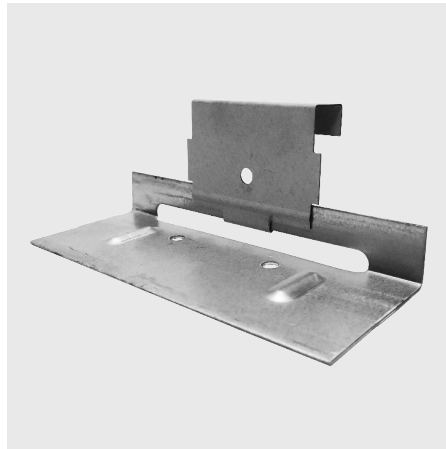
**Box Quantity:** 250

**Steel Engineered:** No

**Aluminum Engineered:** Yes

**Part Number:** XCMS15024CAESM

**Stainless Steel:** Available



## 2" ML EXPANSION CLIP ASSEMBLED — 22GA TAB, 18GA BASE

**Panel Profile:** SMI 2" Mechanical Seam

**Box Quantity:** 200

**Steel Engineered:** No

**Aluminum Engineered:** Yes

**Part Number:** XCMS20022CAESM

**Stainless Steel:** Available (250/box)



## 2" MECHANICAL OPEN FRAMING FLOAT CLIP

**Panel Profile:** SMI 2" Mechanical Seam

**Box Quantity:** 100

**Steel Engineered:** Yes

**Aluminum Engineered:** No

**Part Number:** XCMS20022CSESF

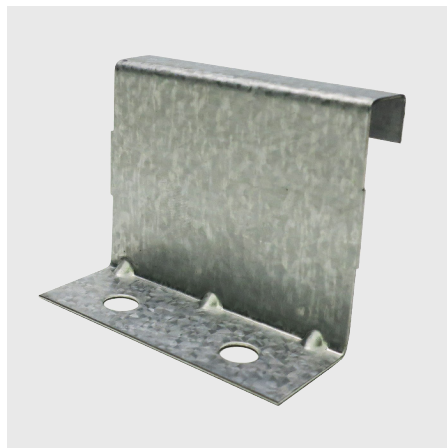
**Stainless Steel:** XCMS20022SSESF

# MECHANICAL LOCK FIXED CLIPS



## 1" ML FIXED CLIP 24GA & 26GA

**Panel Profile:** SMI 1" Mechanical Lock  
**Box Quantity:** 1000  
**Steel Engineered:** No  
**Aluminum Engineered:** No  
**Part Number:** XCMF10024CNUSM  
**Stainless Steel:** XCMF10024SNUSM



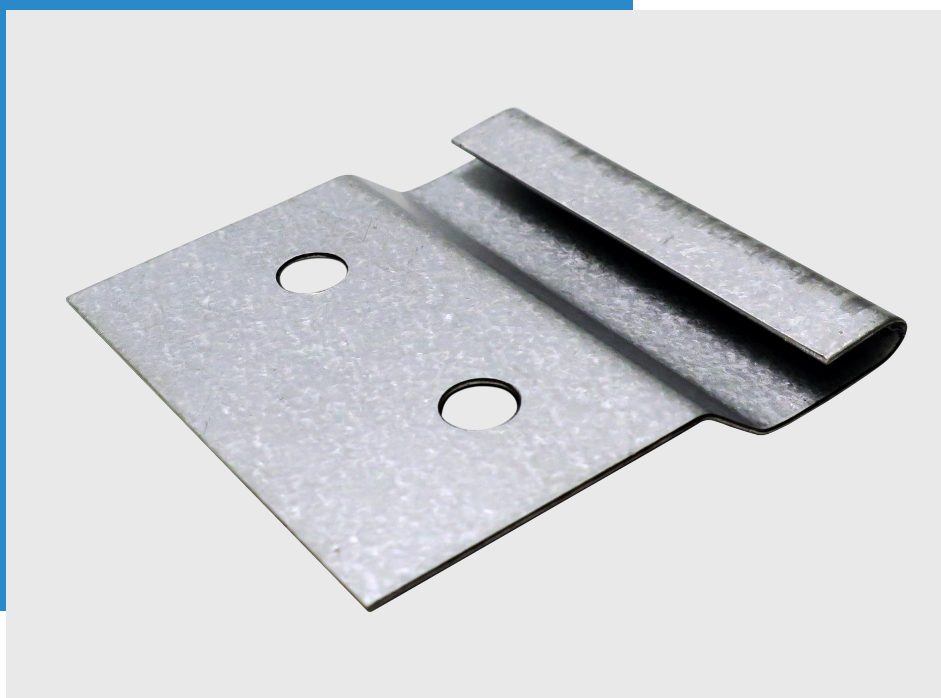
## 1.5" ML FIXED CLIP 24GA & 26GA

**Panel Profile:** SMI 1.5" Mechanical Lock  
**Box Quantity:** 1000  
**Steel Engineered:** No  
**Aluminum Engineered:** No  
**Part Number:** XCMF15024CNUSM  
**Stainless Steel:** XCMF15024SNUSM



## 2" MECHANICAL FIXED CLIP 24GA

**Panel Profile:** SMI 2" Mechanical Lock  
**Box Quantity:** 300  
**Steel Engineered:** No  
**Aluminum Engineered:** No  
**Part Number:** XCMF20024CNUSM  
**Stainless Steel:** XCMF20024SNUSM



## SMI WAV PANEL CLIP

**Panel Profile:** NTM WAV Panel  
**Box Quantity:** 1500  
**Steel Engineered:** Yes  
**Aluminum Engineered:** No  
**Part Number:** XCNTWAVCLIPSM

# PANEL TITE SCREWS



**Bag Quantity:** 250

**Available Sizes:** 3/4", 1", 1-1/2", 2", 2-1/2", 3", 3-1/2"

**Description:** #10-12 x 1.5" Panel Tite

**Substrate:** Steel & Stainless

**Part Number:** XF10HW150WSC(COLOR)TF

**Painted to Match**

## AVAILABLE COLORS ▼





# CLIP SCREWS



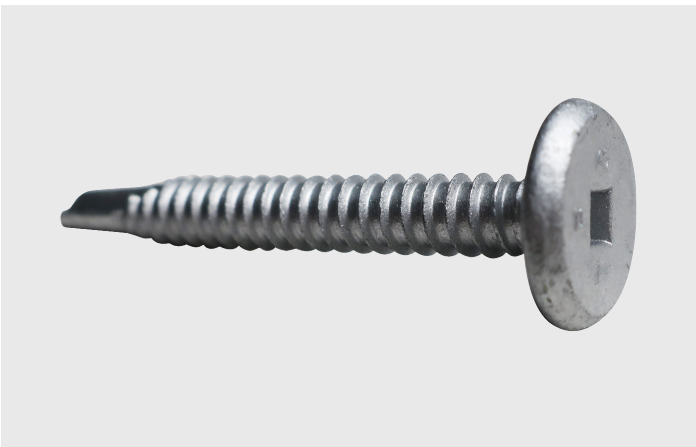
## #10-13 x 1" PANCAKE HEAD SCREW

**Bag Quantity:** 250  
**Available Sizes:** 1", 1-1/2", 2"  
**Substrate:** Steel & Stainless  
**Part Number:** XF10PC100WSCMLTF  
**Designed For:** Wood  
**Used in Engineered Systems Over Wood**



## #10-9 x 1-1/8" ULTRA LOW PROFILE PANCAKE HEAD SCREW

**Bag Quantity:** 250  
**Available Sizes:** 1-1/8", 1-5/8", 2-1/8"  
**Substrate:** Steel & Stainless  
**Part Number:** XF10U112WSCMLTF  
**Designed For:** Wood



## 1/4-14 1" PANCAKE HEAD SELF DRILLER

**Bag Quantity:** 250  
**Available Sizes:** 1"-8"  
**Substrate:** Steel  
**Part Number:** XF14PC100D3MLTF  
**Designed For:** Metal  
**Used in Engineered Systems Over Metal**



## #14-13 x 1.5" PANCAKE HEAD SELF DRILLER

**Bag Quantity:** 250  
**Available Sizes:** 1-1/5"-9"  
**Substrate:** Steel  
**Part Number:** XF14PC150D1CMLTF  
**Designed For:** Metal or Wood

# POP RIVETS



**Bag Quantity:** 250  
**Available Sizes:** #43, #44  
**Substrate:** Stainless Steel  
**Part Numbers:** XPR43(COLOR), XPR44(COLOR)  
**Painted to Match**

## AVAILABLE COLORS ▼





# BUTYL TAPE, SEALANTS, & PAINT



## SINGLE BEAD 1/8 x 1 50-FOOT BUTYL CAULK TAPE

**Sold Per Each**

**Part Number:** X1080BUT



## DOUBLE BEAD 3/16 x 7/8 40-FOOT BUTYL CAULK TAPE

**Sold Per Each**

**Part Number:** X7840BUT



## NOVAFLEX SEALANT

**Sold Per Each**

**Part Number:** XSNF(COLOR)

**Available in All Sheffield Metals Colors**



## AIR DRY KYNAR PAINT PENS

**Sold Per Each**

**Part Number:** XPP(COLOR)

**Applications:** Touch up for cut edges and minor surface scratches

**Available in All Sheffield Metals Colors**



## TOUCH UP SPRAY PAINT CAN

**Sold Per Each**

**Part Number:** XSP(COLOR)

**Applications:** Touch up for minor surfaces and scratches

**Available in All Sheffield Metals Colors**

# DEKTITE PIPE BOOTS



## DEKTITE #1-9

### Available Sizes

1/4" – 2" (#1), 1-3/4" – 3-1/4" (#2),  
1/4" – 4" (#3), 3" – 6" (#4), 4" – 7"  
(#5), 5" – 9" (#6), 6" – 11" (#7), 8" – 13"  
(#8), 10" – 18" (#9)

### Part Numbers

XPB1 (#1), XPB2 (#2), XPB3 (#3), XPB4  
(#4), XPB5 (#5), XPB6 (#6), XPB7 (#7),  
XPB8 (#8), XPB9 (#9)

### Available Colors

Brown, Black, Dark Gray, Light Gray,  
White, Dark Green, Light Green, Dark Blue,  
Light Blue, Bright Red, Terra Cotta

### Sold Per Each



## RETROFIT DEKTITE

### Sold Per Each

**Available Sizes:** 3/4" – 2-3/4" | 2" – 7-1/4" | 3-1/4" – 10"

**Part Numbers:** XPBR1 (3/4" – 2-3/4"), XPBR2 (2" – 7-1/4"),  
XPBR3 (3-1/4" – 10")



## HIGH TEMP SILICONE DEKTITE

### Sold Per Each

**Available Sizes:** #3, #5, #8

**Part Numbers:** XPBHT3 (#3), XPBHT5 (#5), XPBHT8 (#8)

# SHARKSKIN® ROOF UNDERLAYMENTS



## SHARKSKIN COMP UNDERLAYMENT 48" X 250'

**Roll Size:** 10 squares

**Sold Per Each**

**Part Number:** XULSSCOMP004825



## SHARKSKIN ULTRA SA UNDERLAYMENT 48" X 125'

**Roll Size:** 5 squares

**Sold Per Each**

**Part Number:** XULSSULRSA48125



## SHARKSKIN ULTRA SA UNDERLAYMENT 8" X 125' MINI ROLL

**Roll Size:** .833 square

**Sold Per Each**

**Part Number:** XULSSULMINI08125



## SHARKSKIN ULTRA UNDERLAYMENT 48" X 250'

**Roll Size:** 10 squares

**Sold Per Each**

**Part Number:** XULSSULTRA048250

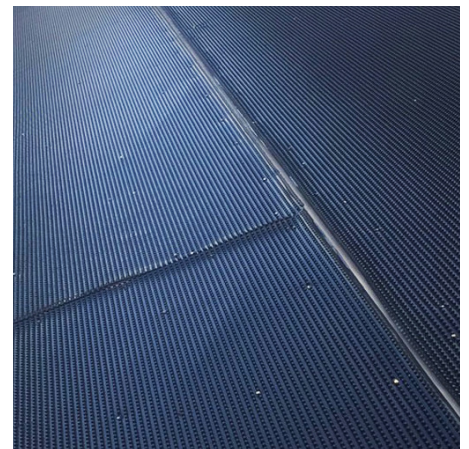


## SHARKSKIN ULTRA RADIANT UNDERLAYMENT 48" X 250'

**Roll Size:** 10 squares

**Sold Per Each**

**Part Number:** XULSSULTRAD048250



## SHARKSKIN VENTILATED MAT 48" X 50'

**Roll Size:** 2 squares

**Sold Per Each**

**Part Number:** XULSSVENMAT48050



# S-5!® CLAMPS



## S-5-E CLAMP

**Description:** (2) 3/8" x .5" setscrews, (1) M8 x 16mm bolt  
**Minor Box Quantity:** 60  
**Master Box Quantity:** 300  
**Designed For:** Traditional double-folded standing seam roofs  
**Compatible With:** All metals except copper



## S-5-N CLAMP

**Description:** (2) 3/8" x .8" setscrews, (1) M8 x 16mm bolt,  
 (1) N insert  
**Minor Box Quantity:** 30  
**Master Box Quantity:** 150  
**Designed For:** Nail-flange SSR profiles (<1" in height)



## S-5-S CLAMP

**Description:** (2) 3/8" x .8" setscrews,  
 (1) M8 x 16mm bolt  
**Minor Box Quantity:** 30  
**Master Box Quantity:** 150  
**Designed For:** Snap-together profiles



## S-5-U CLAMP

**Description:** (2) 3/8" x .8" setscrews,  
 (1) M8 x 16mm bolt  
**Minor Box Quantity:** 30  
**Master Box Quantity:** 150  
**Designed For:** Vertically-oriented seams  
**Fits 85% of standing seam profiles  
 manufactured in North America**



## S-5-V CLAMP

**Description:** (2) 3/8" x .8" setscrews,  
 (1) M8 x 16mm bolt  
**Minor Box Quantity:** 30  
**Master Box Quantity:** 150  
**Designed For:** Vertical machine-  
 folded seams  
**Fits all the same vertically oriented  
 seams as the S-5-U**

# S-5!® COLORGARD



## COLORGARD UNPUNCHED

ColorGard is manufactured from mill-finished, aircraft quality aluminum. It comes in 8-foot long sections. Splices are included with ColorGard for adjacent sections. For use with S-5!® heavy duty clamps.

**Box Quantity:** (12) 8' rails



## VERSACLIP

VersaClip makes installation easy, as it simply slides on the ColorGard crossmember. It can be used with all S-5! clamps.

**Minor Box Quantity:** 100

**Master Box Quantity:** 500



## SNOCLIP II

SnoClip™ is added to retard the migration of snow and ice beneath the crossmembers.

**Minor Box Quantity:** 55

**Master Box Quantity:** 220



## SNOCLIP III

SnoClip™ is added to retard the migration of snow and ice beneath the crossmembers.

**Minor Box Quantity:** 35

**Master Box Quantity:** 140

**Note:** A full line of S-5! products is available.



**SHEFFIELD VILLAGE, OH**

800.283.5262

**ARLINGTON, TX**

877.853.4904

**ACWORTH, GA**

800.929.9359

**LA MIRADA, CA**

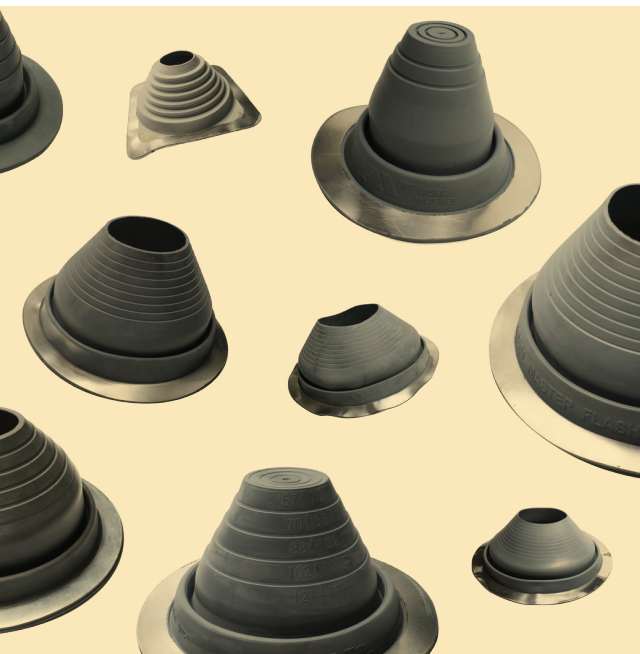
562.383.9800

**DENVER, CO**

877.375.1477

**SAN JOSE, CA**

408.916.3262



[sheffieldmetals.com](http://sheffieldmetals.com)

