



## Construction No. 467 TGKX.467 Roof Deck Constructions

[Page Bottom](#)

### Design/System/Construction/Assembly Usage Disclaimer

- Authorities Having Jurisdiction should be consulted in all cases as to the particular requirements covering the installation and use of UL Listed or Classified products, equipment, system, devices, and materials.
- Authorities Having Jurisdiction should be consulted before construction.
- Fire resistance assemblies and products are developed by the design submitter and have been investigated by UL for compliance with applicable requirements. The published information cannot always address every construction nuance encountered in the field.
- When field issues arise, it is recommended the first contact for assistance be the technical service staff provided by the product manufacturer noted for the design. Users of fire resistance assemblies are advised to consult the general Guide Information for each product category and each group of assemblies. The Guide Information includes specifics concerning alternate materials and alternate methods of construction.
- Only products which bear UL's Mark are considered as Classified, Listed, or Recognized.

### Roof Deck Constructions

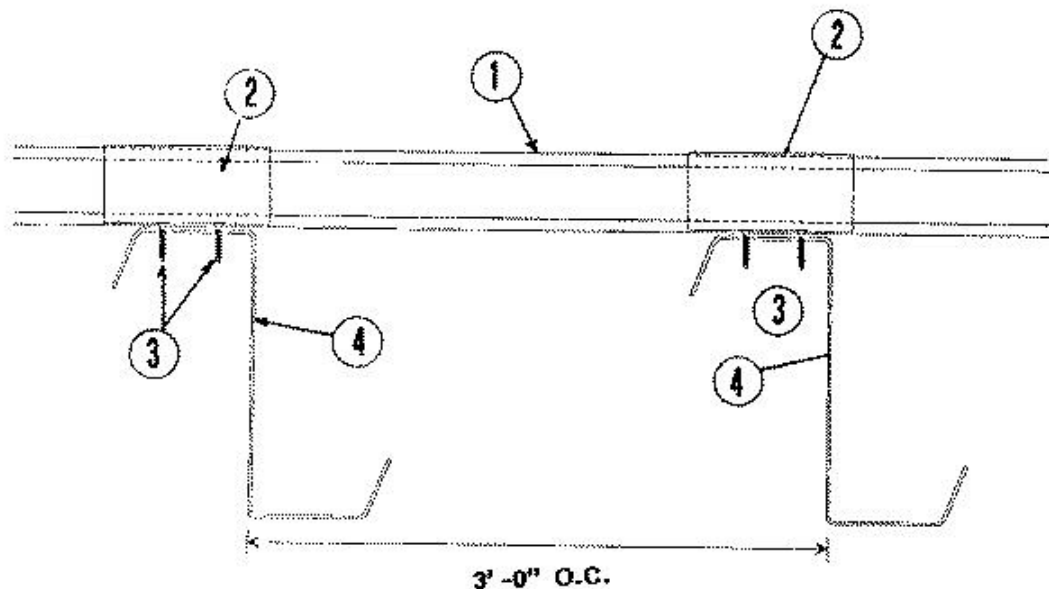
[See General Information for Roof Deck Constructions](#)

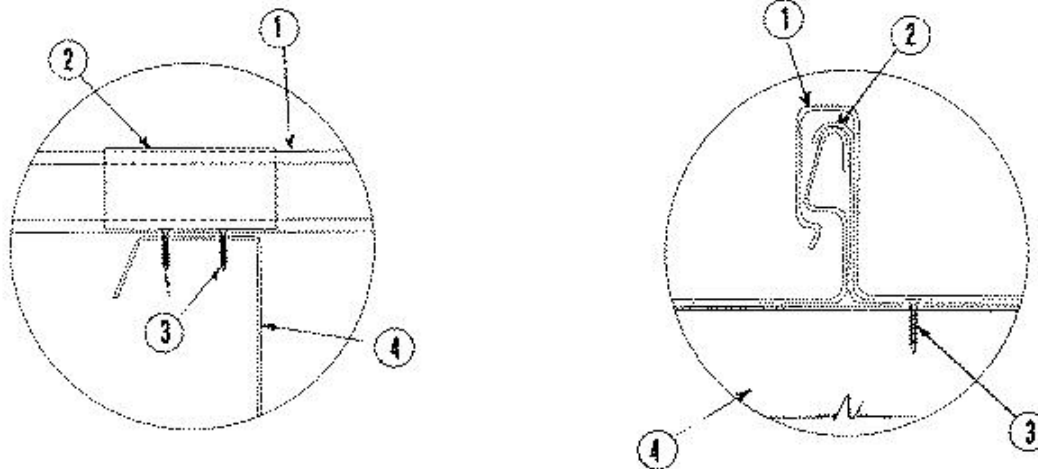
## Construction No. 467

November 12, 2011

**Uplift — Class 90 or 60 (See Item No. 1)**

**Fire Not Investigated**





1. **Metal Roof Deck Panels\*** — No. 24 MSG thick coated steel; for Class 90, 18 in. wide, for Class 60, 19-1/2 in. wide. Female rib 1-1/2 in. high, male rib, 1-3/8 in. high. Ribs formed to snap together. Panels continuous over two or more spans with no end-laps. A bead of sealant may be used at side ribs.

**BOBBY JAMES INC** ([View Classification](#)) — "BJI 550"

**METAL-FAB MFG LLC** ([View Classification](#)) — "Met-Fab 550"

**SHEFFIELD METALS INTERNATIONAL** ([View Classification](#)) — "CR-150-SL"

#### **STREAMLINE ROOFING & CONSTRUCTION**

**INC** ([View Classification](#)) — "150SL"

2. **Roof Deck Fasteners\*** — (Panel Clips) — One piece assembly, 4 in. long with a 1-3/8 in. high leg formed to engage the male side of the panel. Fabricated from 0.034 in. thick stainless steel.

**METAL-FAB MFG LLC** ([View Classification](#)) — "Met-Fab 550"

3. **Fasteners (Screws)** — Fasteners used to attach panel clips to purlins to be No. 10-16 by 1 in. long self-drilling, self-tapping, No. 2 Phillips drive, wafer-head plated steel screws. Two fasteners used per clip inserted through 3/16 in. diam guide holes in clip base.

4. **Purlins** — No. 16 MSG min steel (50,000 psi min yield strength). Spacing to be 3 ft OC.

Refer to General Information, Roof Deck Constructions (Roofing Materials and System Directory) for items not evaluated.

\*Bearing the UL Classification Mark

[Last Updated](#) on 2011-11-12

[Questions?](#)

[Print this page](#)

[Notice of Disclaimer](#)

[Page Top](#)

© 2012 UL LLC

The appearance of a company's name or product in this database does not in itself assure that products so identified have been manufactured under UL's Follow-Up Service. Only those products bearing the UL Mark should be considered to be Listed and covered under UL's Follow-Up Service. Always look for the Mark on the product.

UL permits the reproduction of the material contained in the Online Certification Directory subject to the following conditions: 1. The Guide Information, Designs and/or Listings (files) must be presented in their entirety and in a non-misleading manner, without any manipulation of the data (or drawings). 2. The statement "Reprinted from the Online Certifications Directory with permission from UL" must appear adjacent to the extracted material. In addition, the reprinted material must include a copyright notice in the following format: "© 2012 UL LLC".